

## 3394RT SCISSOR LIFTS

### Platform

- 2.18 m x 3.81 m steel platform (deck extension retracted)
- 1.22 m manual front deck extension
- Fold down handrails
- Dual side entry with half swing gates
- Lanyard attach points
- Proportional drive control with thumb steer
- Proportional lift/lower speed control
- Joystick enable for lift and drive
- Moveable and removable platform console box
- Load sensing system

### Available Options

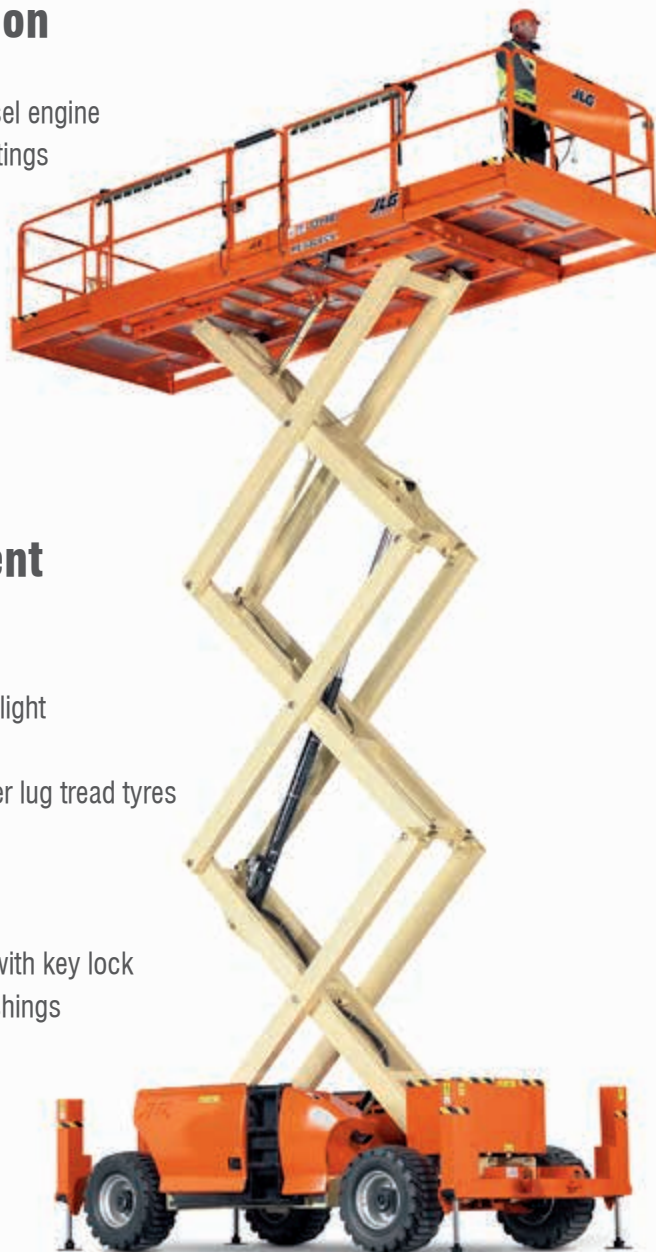
- 1.22 m manual rear deck extension
- 1.22 m powered dual deck extensions
- IN315/55 D20 foam filled loader lug tread tyres
- 12 x 16.5 foam filled non mark tyres
- Hydraulic levelling jacks
- On-board 2500W generator \*
- Descent alarm
- All motion alarm
- 12 mm air line to platform
- Platform work lights <sup>2</sup>
- Nite-Bright® accessory package <sup>2</sup>
- Flashing amber beacon

### Power & Transmission

- Deutz D2011L03 (36.4 kW) diesel engine
- Programmable “Personality” settings
- On-board self-diagnostic testing
- Engine distress warning/shut down system <sup>1</sup>
- Hydrostatic drive with anti stall function
- Two speed drive selection
- Four wheel drive

### Functional Equipment & Accessories

- 3 degree tilt alarm and indicator light
- Steel scissor guards
- 33/1550 x 16.5 foam filled loader lug tread tyres
- Oscillating front axle
- Lifting/tie down lugs
- Hour meter
- Ground control selector switch with key lock
- Lubrication free scissor arm bushings
- Scissor maintenance prop
- Horn
- AC power cable to platform



- Plugs & Sockets
- Catalytic purifier muffler
- Spark arresting type muffler
- Cylinder bellows
- Pipe racks (Rail mounted)
- Pipe positioners
- 12V-DC auxiliary power <sup>3</sup>

<sup>1</sup> Low oil pressure and high coolant temperature alarms with shut-down enabled/disabled by analyser.  
<sup>2</sup> Includes four 40W platform mounted halogen floodlights  
<sup>3</sup> Only applicable on machines equipped with powered deck extensions  
 \* Subject to imminent change

## 3394RT SCISSOR LIFTS

Platform Height – Elevated	10.06 m
A. Platform Height – Lowered	1.57 m
B. Platform Railing Height	1.10 m
C. Stowed Height (Rails Folded)	1.97 m
D. Platform Size	2.18 m x 3.81 m
Front Deck Extension	1.22 m
Rear Deck Extension	1.22 m
E. Overall Width	2.39 m
F. Overall Length <sup>1</sup>	3.89 m
G. Wheelbase	2.95 m
Ground Clearance	0.30 m
Platform Capacity	1,020 kg
Capacity with Optional Deck Extension	905 kg
Capacity on Optional Deck Extension	225 kg
Lift/Lower Time	30/30 sec.
Maximum Drive Height	10.06 m
Machine weight <sup>2</sup>	6,600 kg
Maximum Ground Bearing Pressure	10.40 kg/cm <sup>2</sup>
Drive Speed 4WD	6.4 km/h
Gradeability 4WD	45%
Turning Radius – Inside	2.71 m
Turning Radius – Outside	5.93 m
Axle Oscillation	0.20 m
Tyres	33/1550 x 16.5 Foam Filled
Diesel Engine Deutz D2011L03	36.4 kW
Fuel Tank Capacity	119 L
Hydraulic System	190 L

**JLG Industries, Inc. is a leading designer and manufacturer of access equipment and complementary services and attachments.**

JLG has manufacturing facilities in the United States, France, Romania, China and Belgium. Customers throughout Europe, Scandinavia, Africa and the Middle East benefit from a network of dedicated sales and service operations designed to deliver the highest levels of support.

**JLG is an Oshkosh Corporation company.**

**[www.jlgeurope.com](http://www.jlgeurope.com)**

<sup>1</sup> Dimensions with optional levelling jacks are; Length 4.75 m, Width 2.39 m, Weight +600 kg.  
<sup>2</sup> Certain options or country standards may increase weight and/or dimensions.

